



Hurricane Season..... Preparedness is the Key!

Cory Schwisow
Deputy Director
Monroe County Emergency Management

**Florida Recreation and Parks
Association Annual Conference**

Emergency Management.....

The roots...Civil Defense



Preparedness is the Key!

Comprehensive Nature

- All impacts
- All stakeholders
- All hazards

Progressive

- Anticipate future disasters
- Prevent and Prepare communities



4 Phases of Emergency Management

Prepare

Getting ready for the next disaster.

Respond

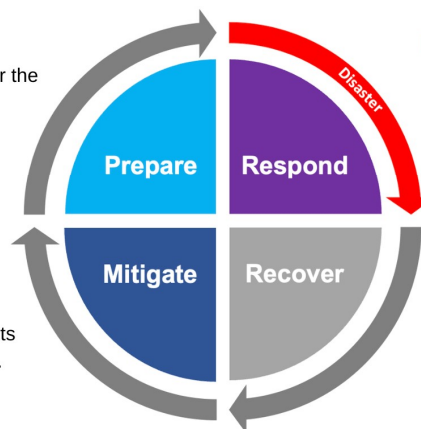
Addressing immediate threats.

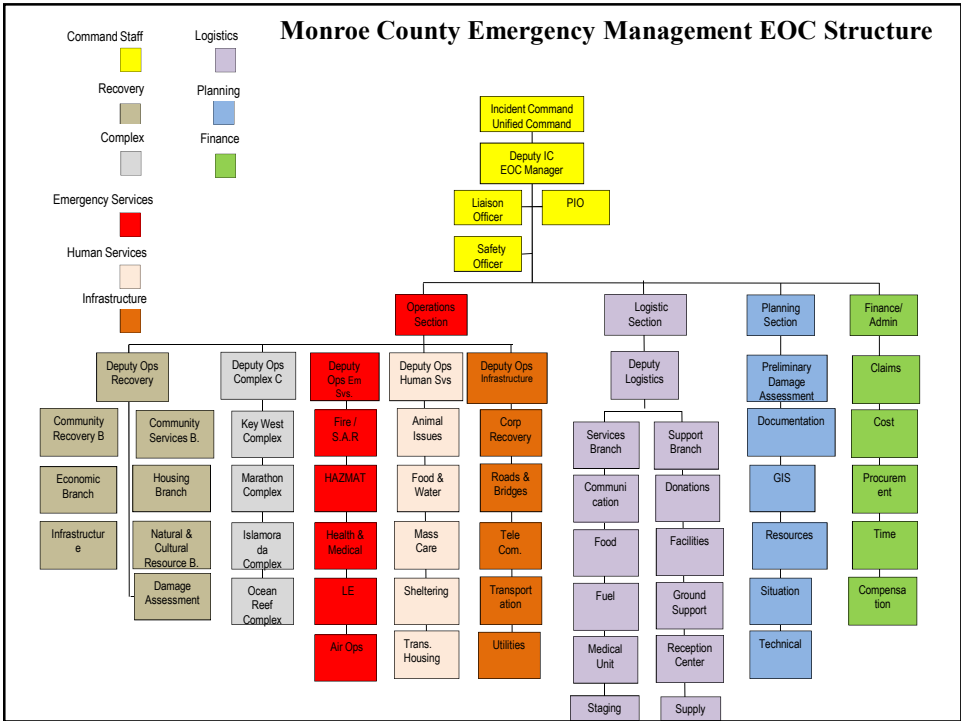
Mitigate

Reducing impacts of future threats.

Recover

Rebuilding to be more resilient.





Activations Since 2016

- ZIKA – FDOH Monroe
- Screw Worm -FI Dept of Agriculture, USDA
- Hurricane IRMA
- Big Pine Fires – MCFR
- COVID-19 – FDOH Monroe
- Tropical Cyclones, Isaias, Laura, ETA, IAN



Preparedness is the Key!

Executive Decisions and Protective Actions

- State of Local Emergency
- Shelter In County or Evacuate



Why Evacuation?

Storm Surge

- Primary concern is water – not the wind

Wind

- RV, Camper, Manufactured/Mobile Home, Boat, etc.

Medical Condition or Poor Health

- Storms are high stress situations
- Assistance will be limited

Isolationism

- Connected to the mainland by 42 bridges
- Resources will be delayed



Evacuation



For Tropical Storms

- Evacuation for RVs, Campers, Mobile Homes
- Low Lying Areas, Livaboards & Visitors
- In County Special Needs Shelters MAY open
- In County Resident Shelters MAY open

For Category 1 & 2

- Mandatory Evacuations for Tourist, Campers & Visitors
- Voluntary Evacuation for Residents
- Out of County Special Needs Shelters – OPEN
- In County Resident Shelters – OPEN
- **A Strong Cat 2 may elevate protective actions**

For Category 3 and above

- Mandatory Out of County Evacuations for Everyone
- Out of County Shelters - OPEN



Shelter

In-County Shelters-General Population

- Key West High School
- Sugarloaf School
- Marathon High School
- Coral Shores High School

Out-of-County Shelters-General Population

- FIU (Special Needs) & E Darwin Fuchs Pavilion
Miami Fairgrounds
- ❖ ALL Shelters are Pet Friendly
- ❖ Pre-registration required!

Visit www.monroecountyem.com to sign up

Residential Re-Entry

- One sticker for each registered vehicle
- Proof of residency: Florida driver's license and vehicle registration or property tax bill and out of county registration for out of county residents.
- These same documents will allow residents through a checkpoint.



Dark Pink:

- Lower Keys Residents,
South of the 7 mile
Bridge to Stock Island
- MM 40-14

Residential Re-Entry



Aqua:

- Middle Keys Residents, South of Long Key to North End of the 7 Mile Bridge
- MM 64 to MM 47



Purple:

- Upper Keys Residents, Countyline including Ocean Reef to North End of the Long Key Bridge
- MM 113 to MM 64

Residential Re-Entry

Key West -Requires their own sticker which is white

Where to Get Re-Entry Stickers

- Key West – City Hall, Police Department
- Ocean Reef to Stock Island –Tax Collector Locations
- Ocean Reef – Public Safety Department

3 Steps for Surviving the Storm

1. Make a Plan
2. Build a Kit
3. Stay Informed

All Storms are Different



Preparedness is the Key!

Monroe County Information Hotline
800-955-5404

ALERT!MONROE

Monroe County's Emergency
Notification System

www.monroecountyem.com

<https://www.floridadisaster.org/planprepare/hurricane-supply-checklist/>



How can Florida Parks and Beaches Help?

Disaster Relief

- Food / Water Distribution Centers
- Housing Aid Stations
- Staging Areas
- Debris Sites



How can Florida Parks and Beaches Help?

Community Centers

- Emergency Financial Assistance
- SNAP (Supplemental Nutrition Assistance Program)
- FEMA Public Assistance Programs
- Monroe County Community Organizations Active in Disasters (COAD)
 - Local Not for Profit

Day Care Programs

- For Local Government Employees





Monroe County Emergency Operations Center

Size:

28,321 square feet (including elevator & stair towers)

Design basis:

- Based on 500-year storm (0.2% chance per year of having a flood of that magnitude occurring)
- Designed for 220 mph wind (Exposure Cat. C / D)
- Impact Rating: Windborne Debris Missile Criteria for Hurricane Shelter Safe Room (FEMA P-361)
- First Floor elevation 20.2 ft. (17 ft. above ground) due to wave action (above code BFE+3) Base Flood Elevation
- Self sustaining for 72 hours for up to 150 people, including
 - food,
 - drinking water,
 - electric power,
 - wastewater storage.
- Emergency communications via satellite phone / internet service.



21

Monroe County Emergency Operations Center

Cost:

- \$30.9 million - \$2.2 million design plus \$28.7 million for construction

Funding Sources:

- 2020 Florida State Legislative Direct Appropriation - \$5.9 million
- FEMA HMGP Grant - \$13.6 million
- FDOT Airport Grant-\$10.7 million



22

